

# Category 6

## Category 6 Shielded Patch Panel



Solarix shielded Category 6 patch panel is designed to be used with other Solarix Category 6 components as a part of the premise connectivity solution. The panel meets all electrical parameters specified in the ANSI/TIA/EIA 568C.2, ISO/IEC 11801, and EN 50173 standards. It supports both T568A and T568B wiring configurations using an easy to read colour-coded wiring label. Each port of this Solarix Category 6 panel is sequentially numbered for easy administration. The panel is equipped with finger-screw strain reliefs to secure the cables and to ensure proper connection between the shielding of cables and the panel. The Solarix shielded Category 6 patch panel is equipped with dual 110/Krone termination block and is supplied in black colour (RAL 9005).



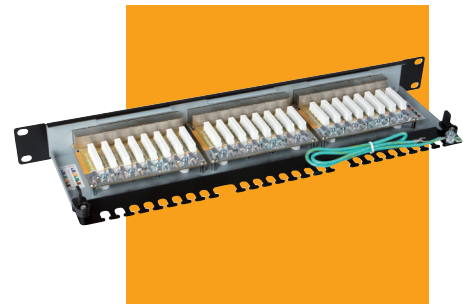
SX24-6-STP-BK

PART. NO.	DESCRIPTION
SX24-6-STP-BK	24-Port Category 6 Shielded Patch Panel, Universal Wiring T568A/B

Number of Ports:	24 x RJ45
Life Cycle:	1 000 plug insertions
Contact Material:	50 µ gold and 100 µ nickel
IDC Block:	dual 110/Krone 8p8c
IDC Block Life Cycle:	200 terminations
Wire:	AWG 26-22
Other Material:	FR according to UL94-0
Colour:	black
Units:	1U
Height:	44 mm
Width:	484 mm
Depth:	137 mm
Storage Temperature:	-40-70 °C
Operation Temperature:	-10-60 °C
Max. Humidity Operation:	93 %



SX24-6-STP-BK



SX24-6-STP-BK